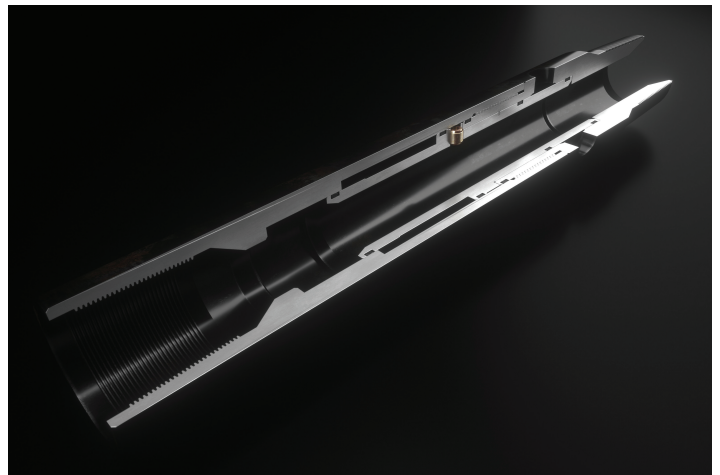


Pressure-Actuated Vents - 2.375" - 3.500" Tubing

GEODynamics' Pressure-Actuated (ORD) Production Vents provide a means of running tubing-conveyed perforating guns into the well with no fluid entry into the tubing and establish a production flow path when operated/opened. The production vent design features eliminate the need to swab or displace with nitrogen in order to achieve the desired under balance and should be considered an essential component when completing with open perforations below the packer. This line of production vents can also be used in combination with the GEODynamics' Circulating/Fill-up Valve to automatically establish the required fluid level in the tubing.

FEATURES/BENEFITS

- Economical, simple, safe, and reliable. Offers an inexpensive way to create necessary underbalance.
- Can be run in vertical, deviated, or horizontal wells.
- Can be run with full range of perforating gun system firing heads.
- Allows the hole to be totally contained at the wellhead before the surge.
- Allows the sleeve to lock in place once the port is opened.
- Does not rely on tubing manipulation; hydrostatic pressure in the tubing is the only force required.
- Can be run in conjunction with Circulating/Fill-up Valve.
- Redressable on location.



Pressure-Actuated Vents - 2.375" - 3.500" Tubing

SPECIFICATIONS

Assembly P/N	TC-BPV-23-ORD	TC-BPV-28-ORD	TC-BPV-35-ORD
Tubing Thread Connections	2-3/8" EU API Box Up x Pin Down	2-7/8" EU API Box Up x Pin Down	3-1/2" EU API Box Up x Pin Down
Length	18.4 in / 0.47 m	19.5 in / 0.50 m	26.5 in / 0.67 m
Outside Diameter	3.06 in / 77.72 mm	3.93 in / 99.82 mm	4.75 in / 120.65 mm
Inside Diameter	1.50 in / 38.10 mm	2.25 in / 57.15 mm	2.88 in / 72.39 mm
Maximum Operating Pressure	14,750 psi / 101.70 MPa	14,000 psi / 96.53 MPa	10,500 psi / 72.39 MPa
Differential Rating	5,000 psi / 34.47 MPa		
Seal Ratings	10,000 psi STD without Back-up rings 15,000 psi with Viton and PEEK Back-up rings		
Tensile Strength	150,000 lbs / 667 kN	210,000 lbs / 934 kN	250,000 lbs / 1112 kN
Minimum Operating Pressure	1,000 psi PAD-I Rupture Disc		

